



Carton Closers - right angled

RA60 / RA90 / RA120

With engineering and project management that really understands the challenges of today's packaging industry the Bradman Lake Group is synonymous with providing innovative solutions. With many decades of experience and thousands of installations to our credit, whether your requirement is a single machine or a totally integrated system, Bradman Lake is the ideal partner for your next project.

Bradman Lake's three flap carton closing machines are designed to handle all types of board. Whether manufactured from thin or heavy gauge chipboard or corrugated micro fluted board finished with high quality printing, the Bradman Lake right angled range of carton closers will produce perfectly formed, square and unblemished cartons that are secure and strong for shipping yet suitable for shelf or freezer display. The RA range comprises three machines with speed capacities ranging from 60 to 120 cartons per minute. The variable speed infeed is designed to accept product at random and automatically meters the cartons into the machines. All machines use the unique 'flexible carton control' (FCC) technology system that allows for cartons containing product of inconsistent size, protruding above the carton base, to be closed without jamming. Servo driven 90° transfer system ensures every carton is positively transferred through 90° as cartons



transit into the second closing stage irrespective of presence of water, grease, product contamination or shifting contents. The RA range provides two machine footprints, the RA60 being the smaller and more compact, while the RA90 and RA120 share a common footprint. The RA120 employs servo control on turn correction, FCC overhead conveyors and twin through slat conveyors.

Standard Features

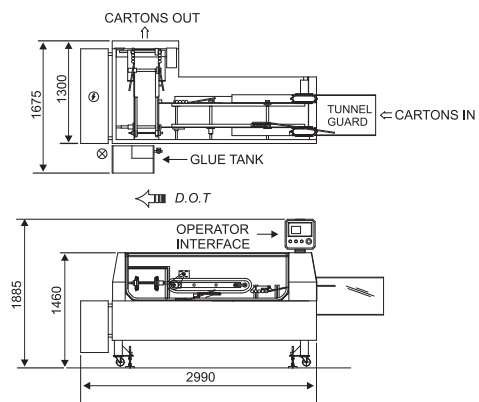
- ◆ Left or right hand machines available
- ◆ Small footprint machines
- ◆ Large carton size range
- ◆ Variable speed 'Random' infeed metering system
- ◆ Flexible Carton Control (FCC) system
- ◆ Overhead FCC conveyors include gas strut lift assist
- ◆ Servo driven positive carton turn system
- ◆ Nordson Pro-Blue hot melt adhesive jetting 3 hose system
- ◆ Rubber roller side and end flap compression
- ◆ Tool-less size change includes handwheel adjustments and digital indicators
- ◆ Allen Bradley control platform
 - Control/Compact Logix PLC
 - Kinetix servo drives
 - Powerflex inverters
 - PanelView HMI

- ◆ Touch screen operator interface includes diagnostics and glue pattern control
- ◆ Ergonomic guard design
- ◆ Stainless steel robust construction
- ◆ Servo lift and adjustment of overhead FCC conveyors

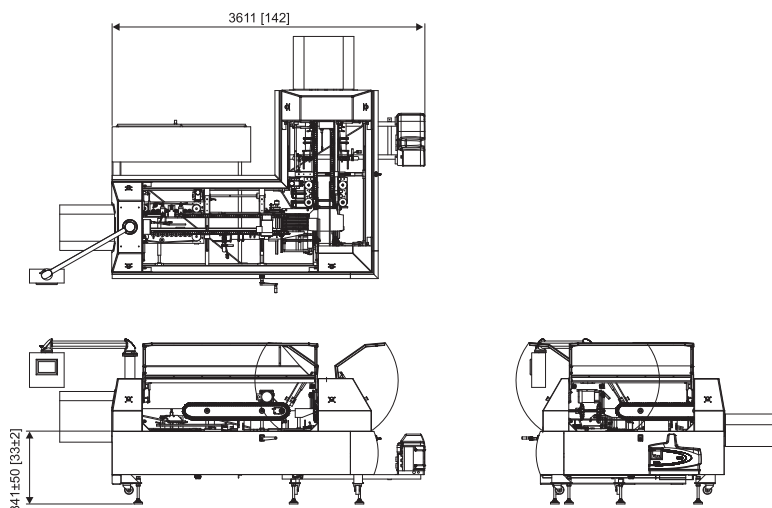
Optional Features

- ◆ Grouped lubrication
- ◆ Upgrade to handle larger cartons
- ◆ Wash down to IP65 (Nema 4X)

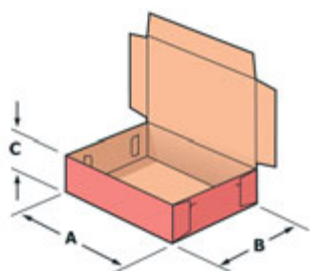
Machine Footprint



RA60



RA90/RA120



Machine Operation

Filled cartons enter the machine and are automatically gapped and metered into the first stage closing section. The carton lids are ploughed down and gently gripped by the FCC conveyor. Hot melt adhesive is applied and the front flap is sealed. The cartons are transferred 90° and enter the second stage closing section. A second FCC conveyor grips the cartons and adhesive is applied to both sides. The end flaps are closed and sealed, and the finished cartons are ejected from the machine.

Min / Max Pack Dimensions

Machine Model	A min/max	Dimensions B min/max	C min/max
RA60	100 / 350	76 / 305	25 / 120
RA90 / RA120	100 / 325	76 / 300	19 / 120

NOTE: All maximum dimensions may not apply on the same carton

Operating Specification

Machine Model	Type	Closure	Max speed Cartons / minute
RA60	Single Servo Turn Correction	Hot melt adhesive	60
RA90	Dual Servo Turn Correction	Hot melt adhesive	90
RA120	Full Servo Machine	Hot melt adhesive	120

NOTE: Maximum speed may vary depending upon carton size and the infeed pitch

Utilities & General Data

Machine Model	Mains electrical supply Europe	Mains electrical supply USA	Electrical loading	Control voltage	Air requirement	Machine weight
RA60	380/400V, 3Ph+N, 50Hz	460/480V, 3Ph+E, 60Hz	5 kW	24V dc	80 psi / 5.5 bar	1,528 kg
RA90	380/400V, 3Ph+N, 50Hz	460/480V, 3Ph+E, 60Hz	5 kW	24V dc	80 psi / 5.5 bar	1,800 kg
RA120	380/400V, 3Ph+N, 50Hz	460/480V, 3Ph+E, 60Hz	5 kW	24V dc	80 psi / 5.5 bar	1,850 kg
Machine Finish	Stainless steel					

CARTONING
CASE PACKING
DISTRIBUTION SYSTEMS
FEEDING SYSTEMS
FLOW WRAPPING
SHRINK WRAPPING
STORAGE SYSTEMS
ROBOTICS

Bradman Lake Inc.
3050 Southcross Boulevard | Rock Hill | SC 29730 | USA
T: +1 704 588 3301 F: +1 704 588 3302

Bradman Lake Ltd.
Common Lane North Beccles | Suffolk | NR34 9BP | United Kingdom.
T: +44 (0)1502 470 500 F: +44 (0)1502 470 599
Yelverton Road, Brislington | Bristol | BS4 5HP | United Kingdom.
T: +44 (0)117 971 5228 F: +44 (0)117 977 5514
sales@bradmanlake.com



Bradman Lake Group
Integrated Packaging Technology

www.bradmanlake.com